



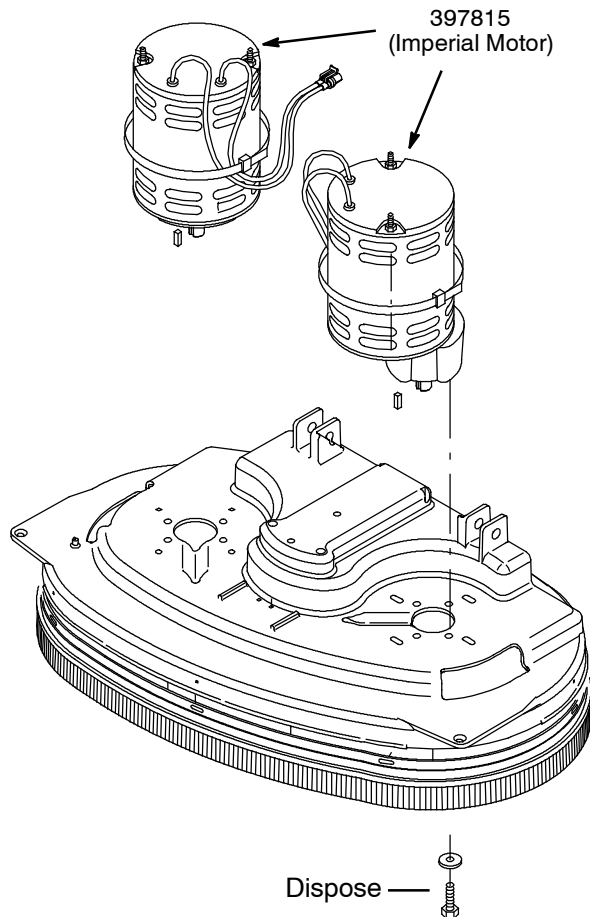
Brush Motor Replacement Kit



NOTICE: Brush Motor (p/n 397815) has been discontinued and replaced by this motor kit. Install replacement motor kit as illustrated below at right.

5680 - 700D, 800D, 900D Disk Models

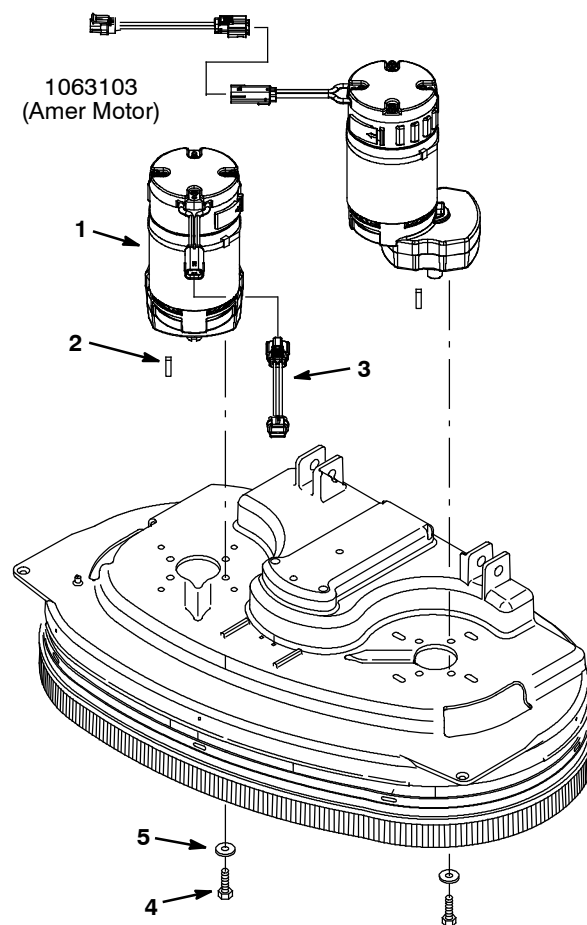
Discontinued Motor



Motor Replacement Kit (p/n 1066328)

IMPORTANT: For proper motor alignment, position motors as shown below.

For early scrub decks, the motor mount hole pattern may not accept replacement motor. A new scrub deck will be required. Contact Service.



Kit Contents

REF	PART #	DESCRIPTION	QTY.
1	1063103	MOTOR, ELE 36VDC 200RPM 0.75HP GEAR	1
	1066573	CARBON BRUSH REPLACEMENT KIT, (Set of 4) For Motor 1063226 - Not included w/ kit.	1
2	00928	KEY, SQ, 0.25X0.25, 0.75L	1
3	1066734	HARNESS, ADAPTER, MOTOR	1
4	09291	SCREW, HEX, M10X1.50X20, SS	4
5	41187	WASHER, FLAT, BELLEVILLE, .38	4

Please keep this sheet with your owner's manual for future reference.